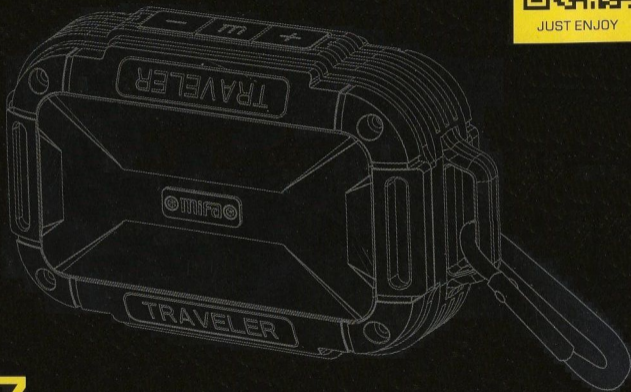


MiFa



BACK TO THE WILD



F7

OUTDOOR BLUETOOTH SPEAKER

USER MANUAL
www.mifalife.net

01 Warnings

English



- ◆ Please use and store this product at room temperature
- ◆ Do not expose this product to rain or wet conditions
- ◆ Do not throw and drop this product to avoid product damage
- ◆ Do not self-dismantling ,repair and transform the product
- ◆ Do not use chemical solvent cleaning the product
- ◆ Please don't arbitrarily discarded or placed the lithium battery in the fire in order to avoid the risk of explosion.

02 Product Features

English

- DSP 3D stereo sound effect
- Class-G NCN digital AMP
- Bluetooth 4.0 music playing
- Hands free function
- Aux-in function
- Support ring tone playing under IOS system ,others are default tone

03 Packing Content

English


Speaker 1pc	3.5mm audio cable 1pc	USB cable 1pc
Hook 1pc	WarrantyCard 1pc	User Manual 1pc

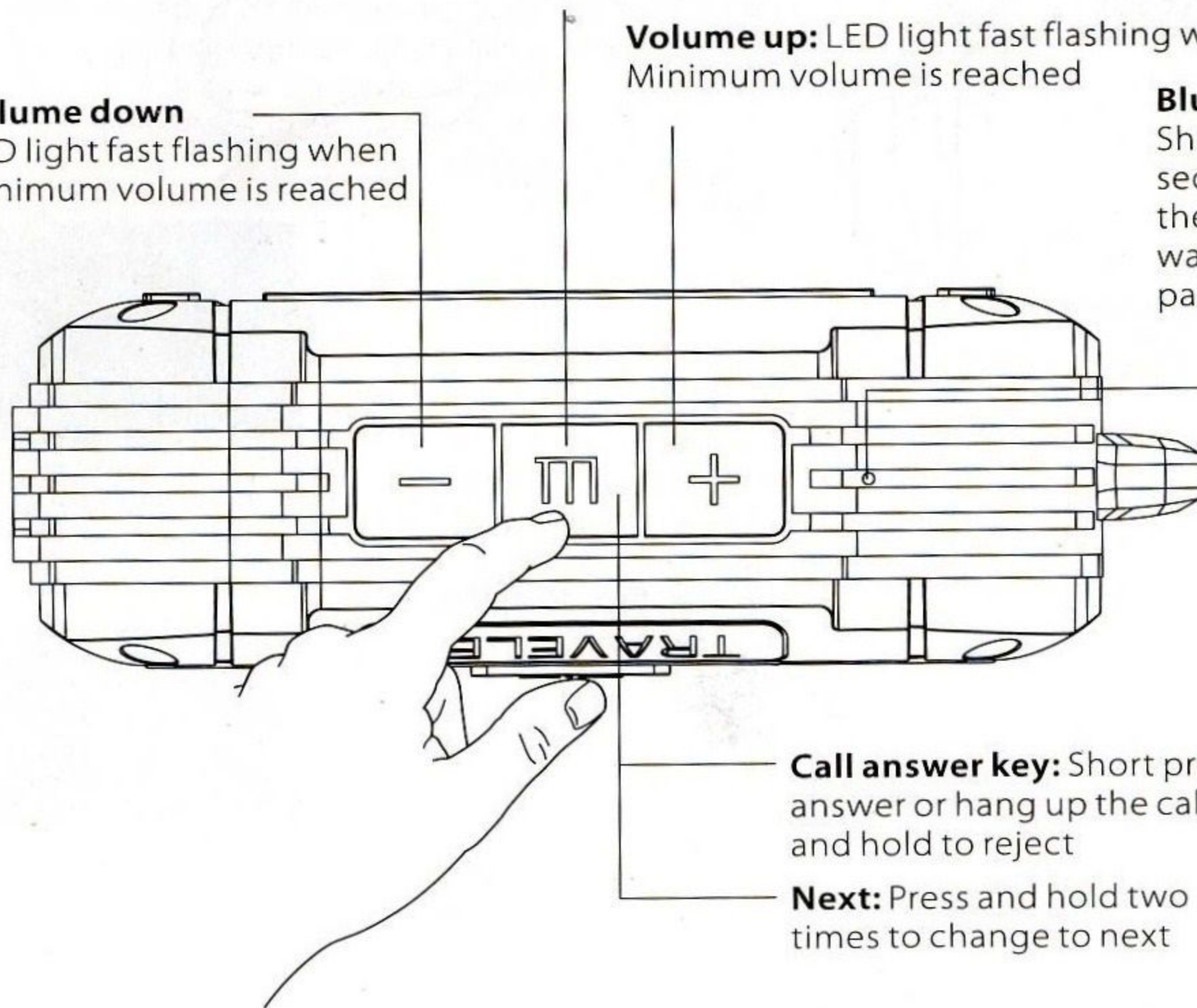
Power key: Press and hold for 2 seconds to power on/off

Play/Pause: Short press to play or pause the music

Volume down
LED light fast flashing when
Minimum volume is reached

Volume up: LED light fast flashing when
Minimum volume is reached

Bluetooth disconnect:
Short press  
seconds, disconnecting with
the current devices, and
waiting for an new devices to
pair



LED indicator

Call answer key: Short press to
answer or hang up the call, press
and hold to reject

Next: Press and hold two
times to change to next

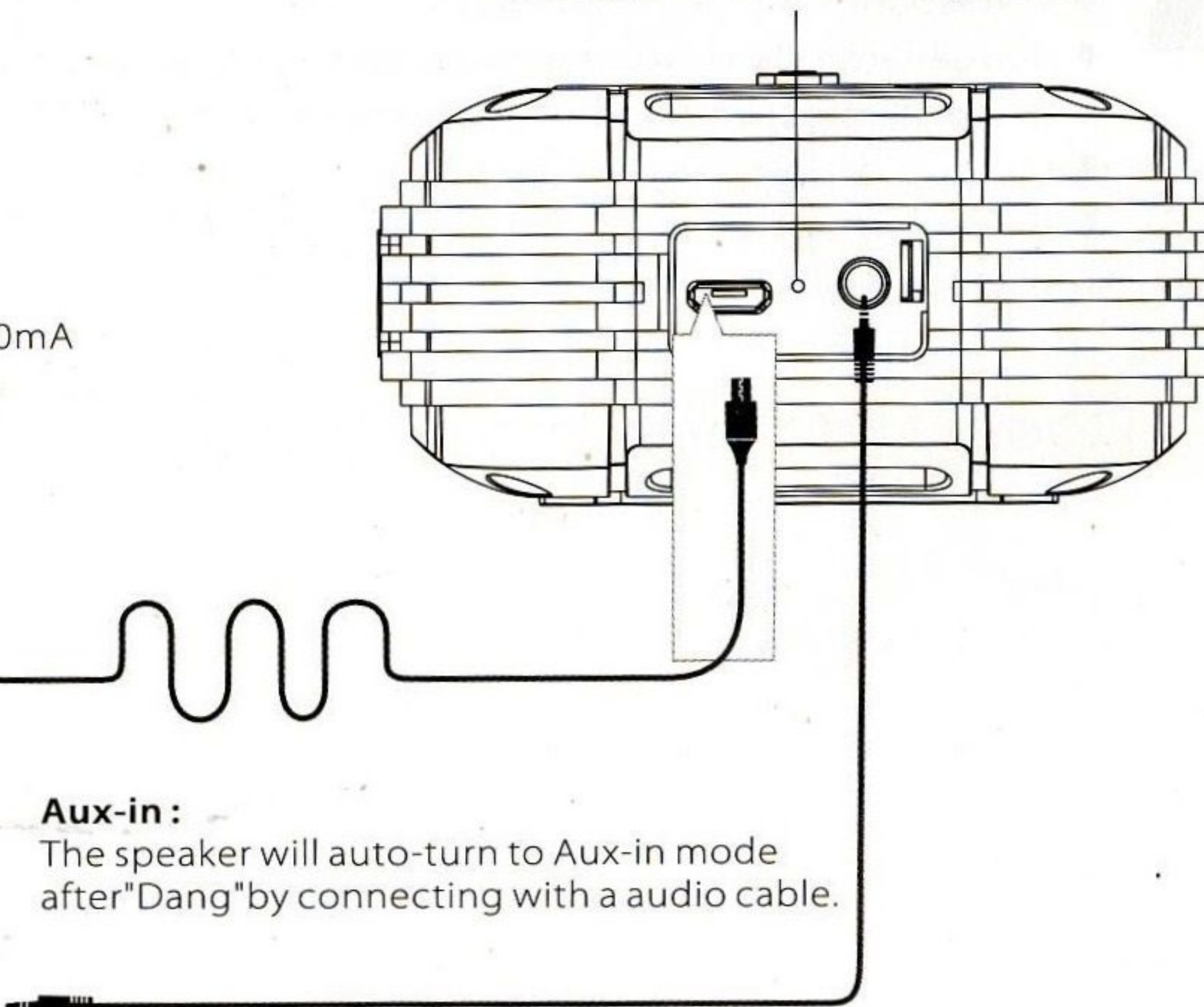


Built-in Microphone



Charging:

Charging with a DC5V~500mA USB adaptor or USB cable.

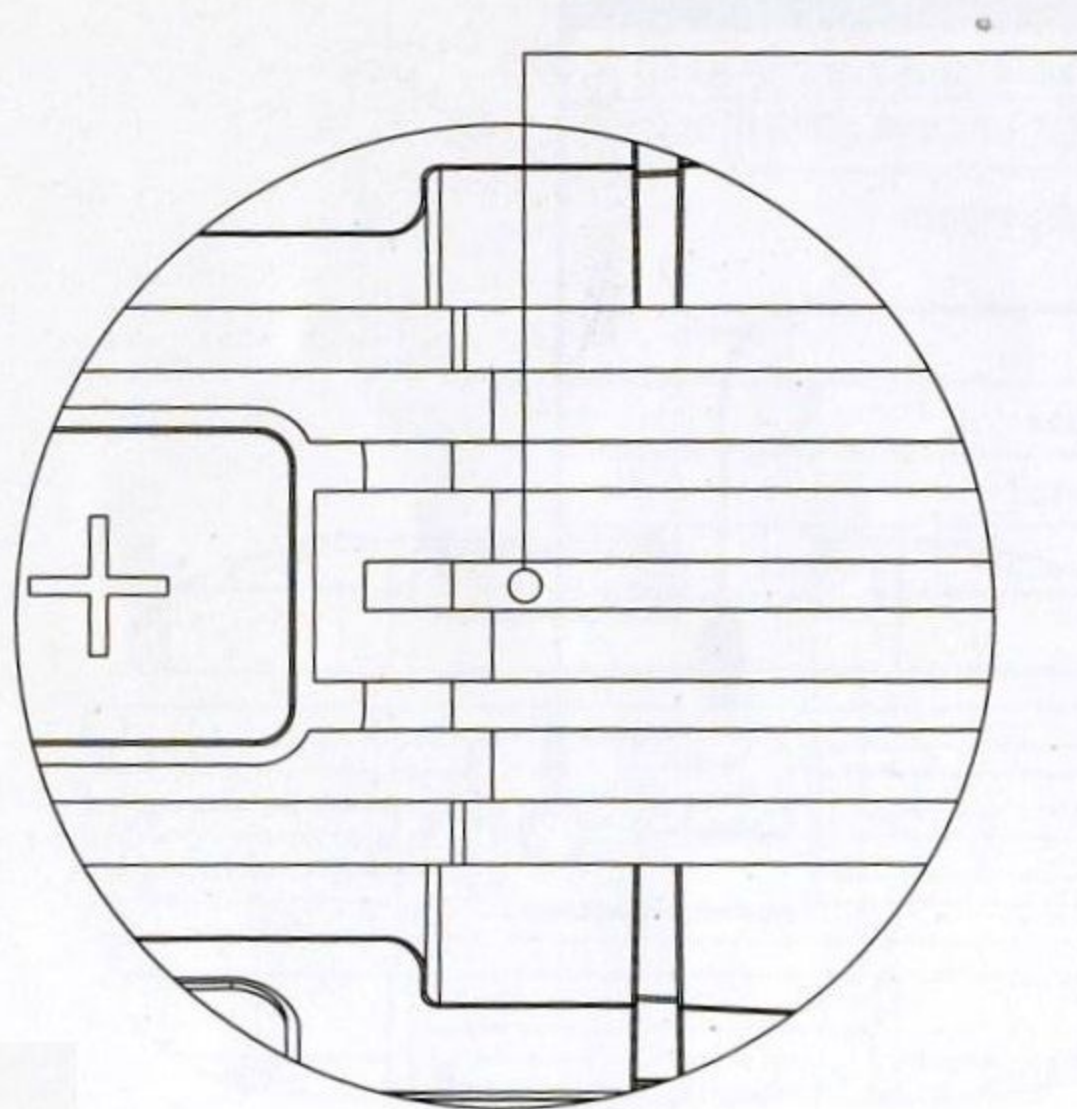


Reset: Press to reset the speaker

Aux-in:

The speaker will auto-turn to Aux-in mode after "Dang" by connecting with a audio cable.





LED indicator



Power on: Blue flashing ,ready for bluetooth pairing , paired continuous blue



Bluetooth/Play/Pause: Blue light flickering slowly



Auxiliary works mode: Blue LED light keeps on



Auxiliary Mute mode: Blue LED light flickering



Max. /Min.volume: Bleu LED light fast flickering

Charging indicator



Red light keeps on when charging,
off when charging completed.

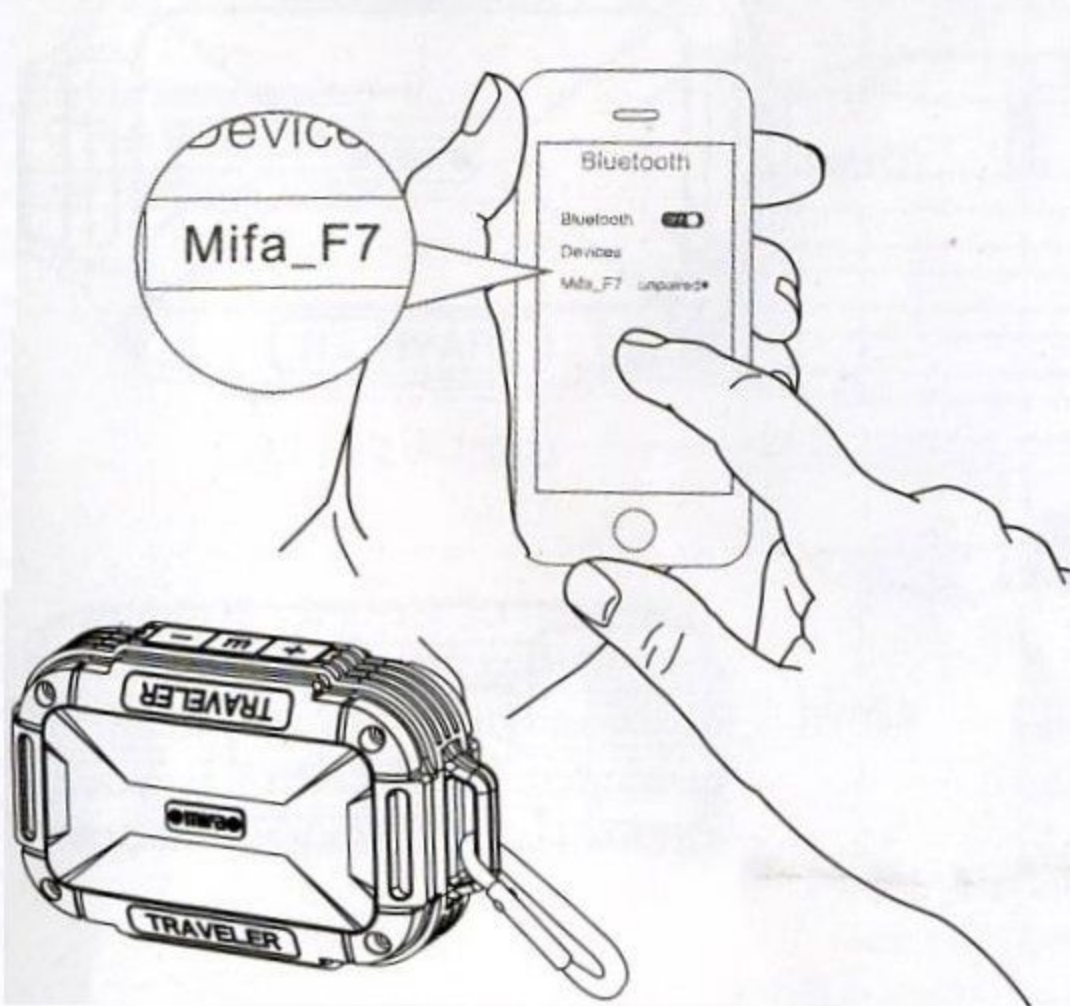


Notes:

Led light will keep flickering when battery low.

The speaker will power off while voice prompt "Dududu".

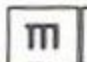

Pairing with the devices that with Bluetooth function.



Bluetooth connecting:

Search "Mifa_F7" in setting list on your phone, confirm to connect. When pairing is complete, blue LED light remains steadily on.

Notes:

- 1, The default password is "0000"
2. The speaker will auto connect the last paired device when it powers on
3. If want to connect other devices, press   to disconnect first, and then the speaker is discoverable and ready to pair a new device.